

TRI-BUILT® FASCIA

FULLY ADHERED OR MECHANICALLY ATTACHED SINGLE-PLY VERSION

TRI-BUILT® Fascia is a three-piece snap-on fascia for single-ply applications. This product provides superior protection from wind and water penetration with economical pricing to maximize your profits. Our in-stock material, quick-to-ship options, and easy installation translate directly into decreased labor costs and enable you to move on to other projects more quickly.

CONTRACTOR BENEFITS:

- One-stop-shop for all roofing components
- Dry-in the roof same day as you install membrane - eliminates labor from temporary tack down
- Includes 20 Year, 90 MPH Wind Warranty
- ANSI/SPRI/FM 4435/ES-1 Tested
- Ease of installation: pre-punched holes, included fasteners, and 12ft. lengths help to minimize install time and improve labor costs
- Quick Service + Easier Installation = GET PAID FASTER

FEATURES & BENEFITS

WIND WARRANTY

The 20-Year, 90 MPH Wind Warranty is available on orders to meet a project's specification. It provides a maximum of 20 years, 90 MPH coverage for the repair or replacement of any portion of the roof edge system that has failed due to a defect in supplied materials.

TESTING

Tested per ANSI/SPRI/FM 4435/ES-1 Standard to comply with the International Building Code.

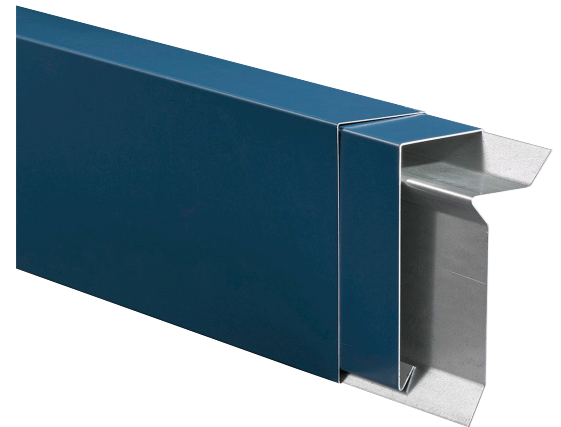
COLORS

Choose among a wide range of standard colors and finishes that meet your job requirements.

- Express colors are available and have shorter lead times for 24 ga., .040" and .050" only.
- A 30-Year Kynar 500® Finish Warranty is included on coil-coated standard colors. Custom post-coated Kynar 500® colors are available with an included 10-Year Kynar 500® Finish Warranty or a 20-Year Kynar 500® Finish Warranty is available upon request.
- See color chart for more detailed information on color options.

EFFICIENT DESIGN

- Provided in 12'-0" lengths
- Pre-punched holes for quicker installation and lower labor costs
- Slotted fastening holes allow for thermal movement of the materials and ensure correct fastener placement and spacing



STANDARD SIZES

Sizes range from 3 1/2" up to 7 3/4" face heights to accommodate multiple nailers and coverage requirements.

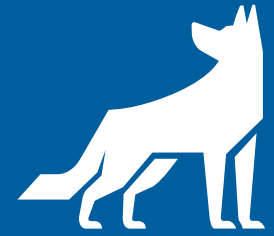
- 3.5"
- 4.75"
- 6.25"
- 7.75"

PRODUCT COMPONENTS

- 22 ga. galvanized steel formed cleat
- Snap-on fascia cover
- Cover splice plate
- Fasteners

ACCESSORIES

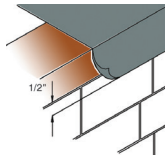
Factory fabricated accessories provide a cleaner, more aesthetically pleasing appearance. This eliminates the need for field fabrication, providing time and labor savings.



INSTALLATION IN 4 EASY STEPS

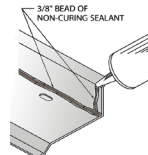
STEP 1

Place membrane over roof edge, fully covering nailer.



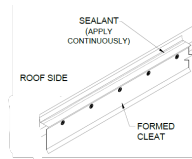
STEP 2

Apply sealant to cleat (shown with inside face up).



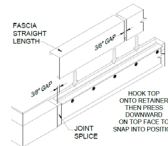
STEP 3

Fasten cleat to nailer through pre-punched holes.



STEP 4

Remove protective film from cover and snap onto cleat.



COMPLETE!

Move on to your next project.

- NO crimping
- NO stripping-in
- NO welding
- Provided in 12' lengths
- Pre-punched holes
- Includes all fasteners

PRE-ENGINEERED VS SHOP-FABRICATED

There are a variety of options for a roofing contractor to consider when choosing the right edge metal for your commercial roofing project. Things like ease of installation, quality, testing, and warranties can make a big difference in your decision to choose a shop fabricated metal versus a pre-engineered roof edge solution.

PRE-ENGINEERED ↓



OVERALL COST

- Designed to maximize efficiencies
- Less components and materials
- Fasteners included
- Factory punched holes avoids rework (i.e. Dropped fasteners, pre-drilling, missing the nailer)



QUALITY & CONSISTANCY

- Robotics help eliminate call backs
- Standardization creates consistency



TESTING & WARRANTY

- ANSI/SPRI/FM 4435/ES-1 Tested
- 20-year, 90 MPH Wind Warranty
- Paint and workmanship warranties



LEAD TIME

- Product in inventory
- Ready to ship/pickup
- Terminate the roof same day - NO CAP NAIL

SHOP-FABRICATED ↓

- More tools and equipment required
- Fasteners not included

- Varies by shop and location

- Testing varies by fabricator
- If tested, limited to small range of products
- Warranty varies by material supplier

- Product typically not stocked